

Flexica



Flexica

- Flexica is a partitioning system of modular construction divided into panels of both glass and plates. Flexica has a characteristic slim bar between the horizontal divisions.
- Modules can be supplied in widths from 300 mm to 1250 mm. However, as standard they are made in widths of 900 mm and 1200 mm. Glass modules can be supplied single or double glazed.
- Venetian blinds can be incorporated, and there is a wide selection of glass types to choose from. Plates can be delivered with different surfaces, as requested.
- As standard, Flexica is delivered with an "Omega" junction profile; alternatively, it can be delivered with the slimmer junction profile "Aspira".
- Triplan's selection of inventory, e.g. shelves, boards and cabinets, can be mounted directly on the junction profiles of the walls.
- Flexica can incorporate a variety of door options.

General information

Triplan partitioning systems are easy to install. The various systems are all based on the same components, so that a wall can be converted to another type; a glazed wall can, for example, be changed to or integrated with a panel-covered wall in a short time and without dismantling the whole structure.

Triplan partitioning systems are delivered ready for immediate installation and use.

Most components in a Triplan wall can be re-used in connection with re-location.

The basic construction of the partitioning system provides excellent sound, fire and environmental properties.

For more information, please visit: www.triplan.net

 mm
  Kg/m²
  mm
  Rw dB
  Min.
  Post

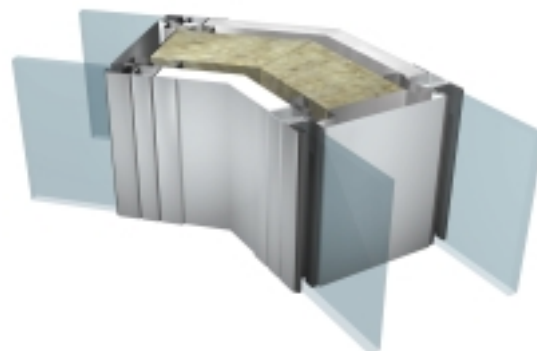
Please contact your local Triplan representative or visit www.triplan.net for further information and technical specifications.

	mm	Kg/m ²	mm	Rw dB	Min.	Post
TF-1	100-200	30-60	50 (2x50)	42-56	30-120	72 mm
TF-2	75-165	28-56	50 (2x50)	41-53	30-90	49 mm
TFG-1	75/100	18	N/A	26-32	-	49/72 mm
TFG-2	75/100	29	N/A	36-40	-	49/72 mm

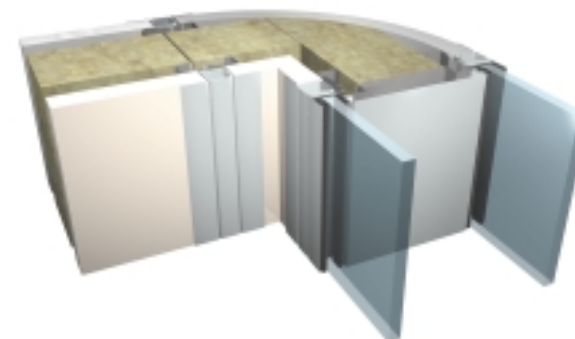
Flexica



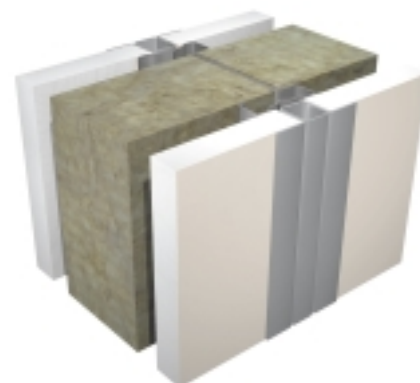
45° Corner (Double Glazed)



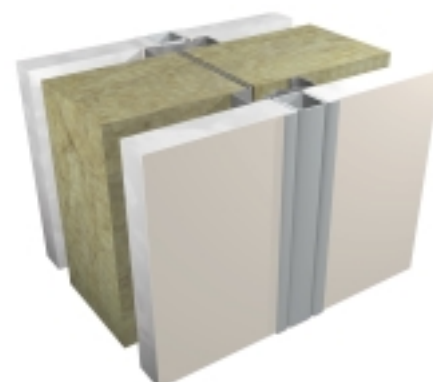
90° Corner (Round)



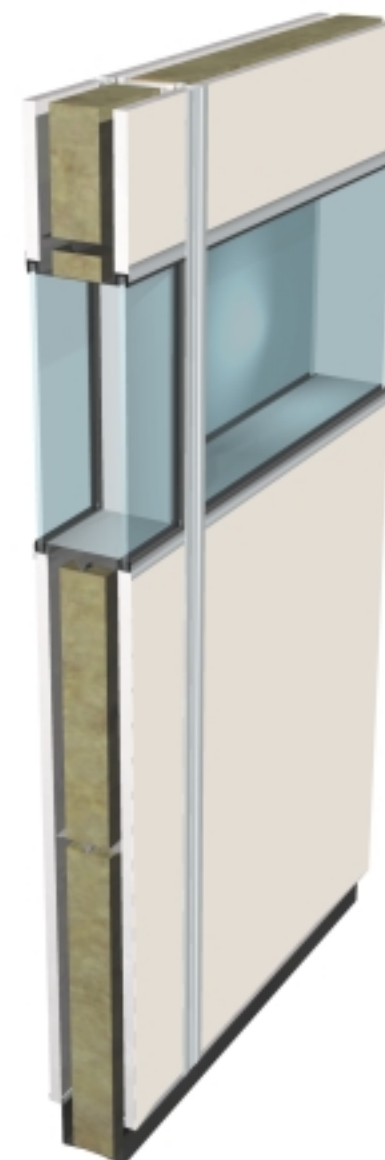
Module Junction



Module Junction (Aspira)



Vertical Module Section



Module Junction (Glazed)

