

FACTS ON TP FIRE

- Glass partition with a single layer of glass
- Supplied as classified or unclassified in steel or aluminium. Framed glazed doors with side lights
- Meets various sound demands too
- All frames are produced inhouse at our own factory - this means that we can ensure high quality and a fast delivery time

TP FIRE

FIRE RATED GLASS FRONTS

triplan.net | T.: +45 43539999 | info@triplan.net

Triplan[®]
DANISH QUALITY

1. WALL TYPES



TP Fire fire rated partitions are divided into

- TP Fire S (S = steel)
- TP Fire A (A = aluminium)
- TP Fire Lite (Lite = frameless partition without vertical metal junctions)

TP FIRE STEEL

Wall type	Sound reduction of glass*	Glass thickness mm	Wall thickness mm	Weight glass kg/m ²
TP Fire S unclassified	-	-	50	-
TP Fire S E30	Rw 34 dB	8	50	20
TP Fire S EW30	Rw 38 dB	13	50	30
TP Fire S E60	Rw 38 dB	13	50	30
TP Fire S EW60	Rw 38 dB	14	50	31
TP Fire S EI30	Rw 38 dB	16	60	34
TP Fire S EI60	Rw 41 dB	25	70	52

TP Fire S Lite EW30	Rw 39 dB	20	50	42
TP Fire S Lite EW60	Rw 39 dB	20	50	42
TP Fire S Lite EI30	Rw 42 dB	23	60	52
TP Fire S Lite EI60	Rw 43 dB	31	70	69

*Calculated values



TP FIRE ALUMINIUM

Wall type	Sound reduction of glass*	Glass thickness mm	Wall thickness mm	Weight glass kg/m ²
TP Fire A unclassified	-	-	65	-
TP Fire A E30	Rw 34 dB	8	65	20
TP Fire A EW30	Rw 38 dB	13	65	30
TP Fire A EI30	Rw 38 dB	16	80	34
TP Fire A EI60	Rw 41 dB	25	80	52

TP Fire A Lite EI30	Rw 42 dB	23	80	52
TP Fire A Lite EI60	Rw 43 dB	31	80	69

*Calculated values

2. DOOR TYPES



Doors can be supplied as single framed glazed doors or double framed glazed doors in steel or aluminium with or without glass above and optionally with drop seal. Fire rated wooden doors are optionally available for the TP Fire S system. The fire rated wooden doors are however not tested in combination with TP Fire S. Available in individual design in optional dimensions.

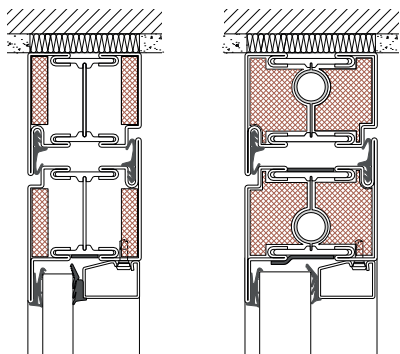
The steel frames are hot galvanized and powder coated in a colour of your choice. TP Fire S is also available in stainless steel, untreated or polished (contact Triplan).

Doors may optionally be equipped with electric strike plates, electric lock cases, door closers, panic bars etc.

Triplan's production facilities are modern and flexible which allows for taylor made sizes without causing long delivery times.

DOOR SOLUTIONS

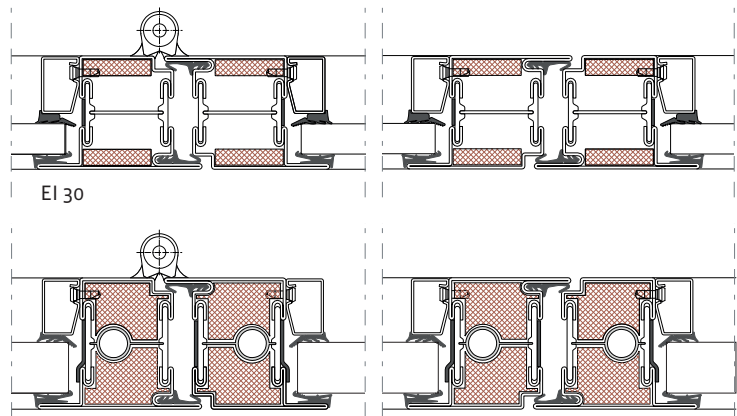
See further detail drawings at triplan.net



EI 30

EI 60

TP Fire S. Vertical section.
Door solution head detail.

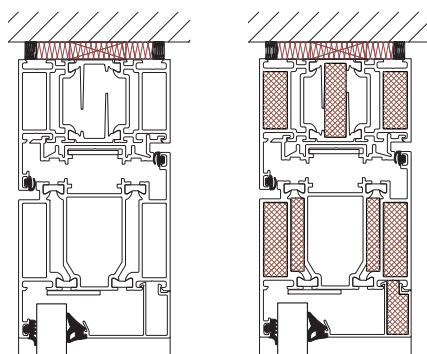


EI 30

EI 60

TP Fire S. Horizontal section.
Door solution with side light.

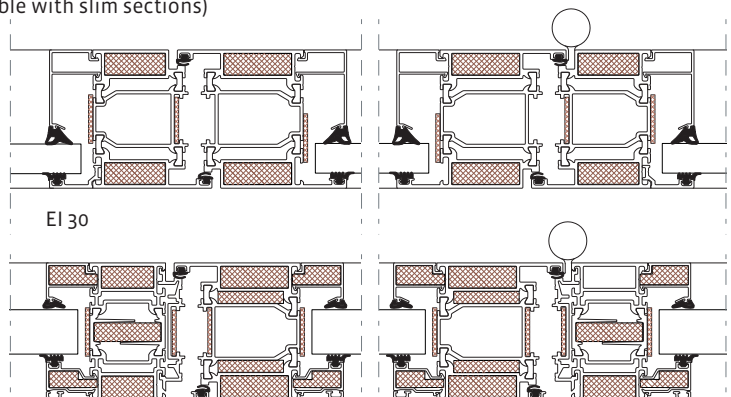
(Door solutions in TP Fire S EI 30 are optionally available with slim sections)



EI 30

EI 60

TP Fire A. Vertical section.
Door solution head detail.



EI 30

EI 60

TP Fire A. Horizontal section.
Door solution with side light.



DOOR TYPES

Framed glazed door	Fire classification	Sound rated glass*	Frame thickness mm
Steel	Uklass.	Rw 42 dB	50
Steel	E 30	Rw 34 dB	50
Steel	EW 30	Rw 38 dB	50
Steel	E 60	Rw 38 Db	50
Steel	EW 60	Rw 38 dB	50
Steel	EI 30	Rw 38 Db	60
Steel	EI 60	Rw 41 dB	70
Alu	Uklass.	Rw 42 Db	65
Alu	E 30	Rw 34 dB	65
Alu	EI 30	Rw 38 dB	80
Alu	EI 60	Rw 41 dB	80

For more details on wooden doors please consult Triplan.

DOOR ACCESSORIES

Door closer, type**

- Dorma TS 93B with slide channel (hinge side)
- Dorma TS 93G with slide channel (opposite hinge side)
- Dorma 93B GSR (double door)
- Dorma 93B EMF 1 (automatic)
- Dorma 93B GSR EMF 1 (double door)

Threshold, type

- Stainless steel threshold

* Dependent on the choice of glass

** Standard solutions. For other demands please consult Triplan

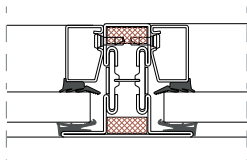
3. JUNCTIONS



Junctions in the glass wall consist in TP Fire S and TP Fire A of a vertical metal junction. In TP Fire Lite a 4 mm fire rated silicone groove is used.

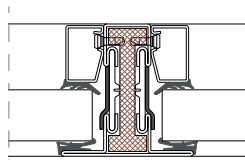
JUNCTIONS

See more detail drawings at triplan.net

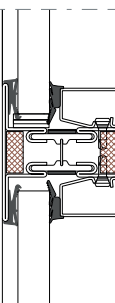


EI 30

TP Fire S. Horizontal section. Vertical module junction.

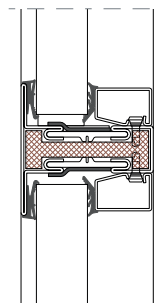


EI 60

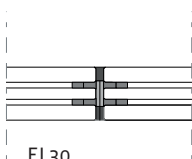


EI 30

TP Fire S. Vertical section. Horizontal module junction.

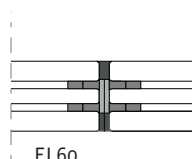


EI 60

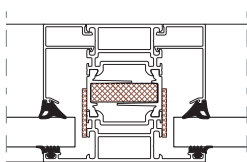


EI 30

TP Fire Lite. Horizontal section. Vertical module junction.

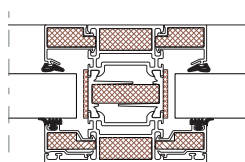


EI 60

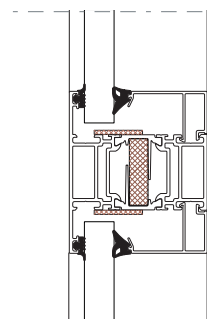


EI 30

TP Fire A. Horizontal section. Vertical module junction.

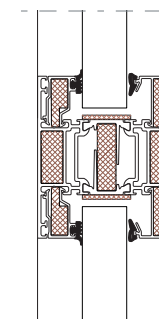


EI 60



EI 30

TP Fire A. Vertical section. Horizontal module junction.

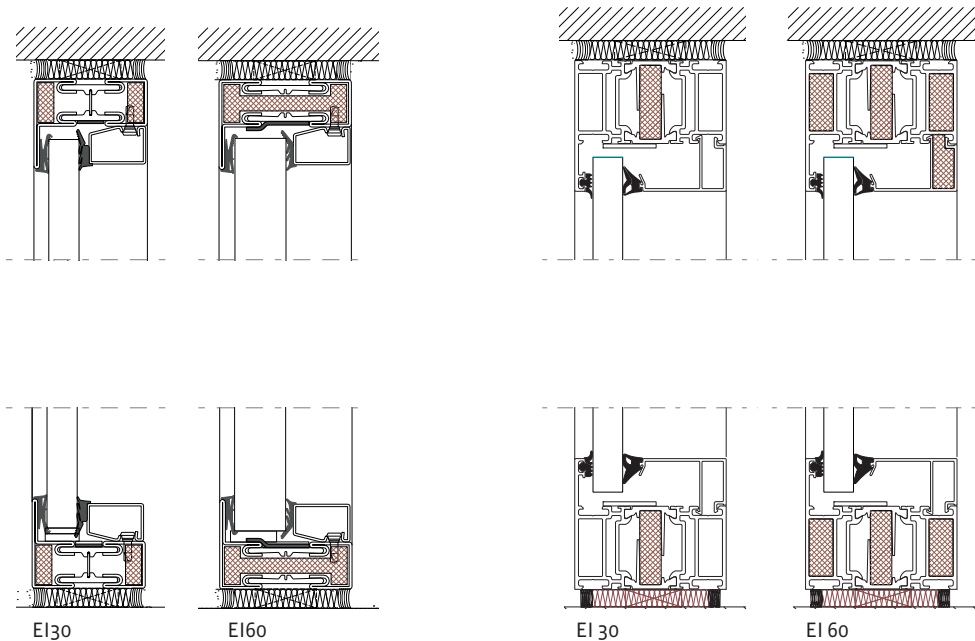


EI 60



ABUTMENTS

See more detail drawings at triplan.net



TP Fire S. Vertical section.
Head and base detail.

TP Fire A. Vertical section.
Head and base detail.

TP FIRE

– Fire rated glass fronts

- An elegant and simple system
- Meets all demands to fire rating
- Slim design
- Easy to install

Read
more at
triplan.net

OPERATION AND MAINTENANCE

Glass: **Cleaning for the first time:**
Glass delivered from Triplan has been washed, but not polished. Can be wiped off with a weak ammonium chloride solution followed by washing with clean water and drying with a dry cloth.

Ongoing cleaning:
Glass should be washed as needed using a suitable cleaning agent and polished with a soft cloth. Use clean water and equipment to avoid scratches.

Doors: Door surfaces and frames are cleaned by wiping them with a moistened cloth, wrung with a weak solution of water and ordinary cleaning agent. Avoid cleaning agents containing alcohol, solvents, chlorine or ammonium chloride. Hinges and lock cases should be lubricated as needed, but at least once a year.

Runners: Sections and sealing tape should be cleaned by wiping them with a moistened cloth wrung with a weak solution of water and ordinary cleaning agent. Avoid cleaning agents containing alcohol, solvents, chlorine or ammonium chloride.



The TP system also includes

TP Lite

TP Lite Twin

TP Acoustic