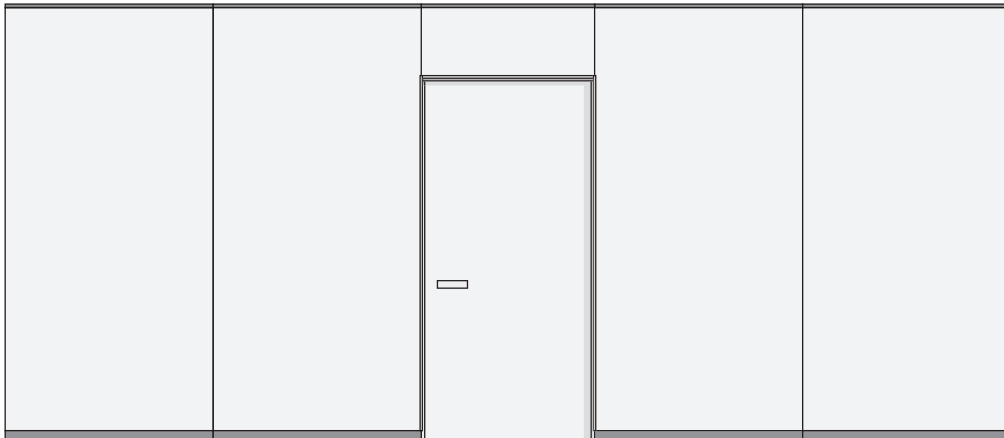


# Ventura

Office Partitions  
Technical guide



Despite its minimalistic and sleek design, Ventura is a genuine, relocatable office partition in line with other products in the Triplan system. This relocatable office partition has no exposed sections, each individual module can be demounted and still replaced with, for example, glass or door modules.

Ventura is a relocatable office partition with a discreet V-section in the module joints, thus ensuring a modern wall.

Ventura Horizontal is Ventura with a horizontal module joint.

Apart from being a flexible, relocatable office partition, Ventura can be combined with other Triplan product lines which adds to the flexibility since the system can be adapted to any change made inside the building. Quick noise- and dust-free assembly and relocation without the use of special tools.

Ventura is available in wall thicknesses from 75 to 165mm with an Rw sound reduction from 43 to 53 dB.

**Module system**

Like all product lines in the Triplan system, Ventura is a modular office partition with vertical or horizontal module joints. The standard widths of the wall modules with vertical module joints are 900 and 1200mm, but the modules are also made to measure in widths from 200 to 1200mm.

Horizontal module joints are made to measure for projects.

The standard widths of the door modules are 900 and 1000mm for single doors and

1200,1500 and 1730mm for 1,5 leaf and double doors.

**Modules with panels**

Panels for modules are available as standard in plasterboard covered with wallpaper and in other surfaces as required, such as in veneered or steel-covered panels, melamine or laequered MDF. Ventura offers many solutions.

**Joints**

The module joint of Ventura is characterised by the discreet V-section in the module joints.

**Combined Triplan systems**

Ventura consists of the same basic components as other product lines in the Triplan system and can, therefore, be combined with these lines; for example as an extension of a glass wall and/or combined with Flexica Glass as a connecting wall for Ventura.

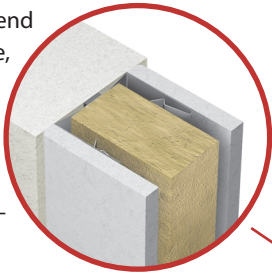


A wide range of joint sections for modules, panels and doors as well as for fixing to ceilings, walls and floors are available for Ventura.

The simplest joint sections are shown here.

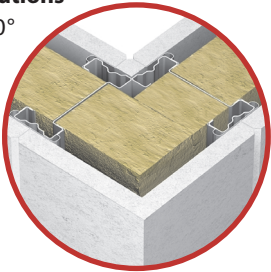
#### Fixing to walls

Fixing to the existing walls of the building, perpendicular to them or as end-to-end solutions. Here, the office partition is fixed to the existing wall using a concealed fixation method.



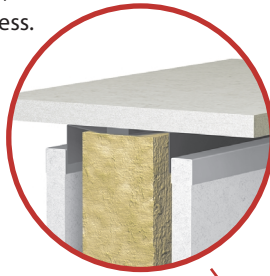
#### Corner solutions

45° and 90° corner solutions are available.



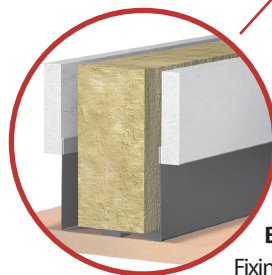
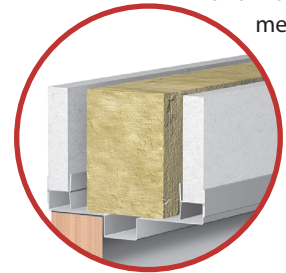
#### Top solutions

Fixing to the ceiling using simple and stable structures. Also solution for suspended ceilings. Here, shown with a recess.



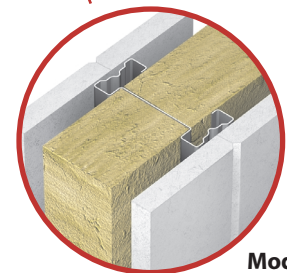
#### Door solutions

The Ventura range allows integration of a variety of frame and door solutions, such as glass and wooden doors in optional dimensions and surfaces and with steel, aluminium and wooden frames.






#### Base solutions

Fixing to floor using simple and stable structures. The solution shown has a 50mm recess. Levelling solutions for sloping floors as well as a variety of skirtings are available.

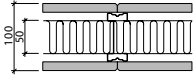
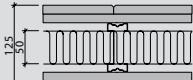
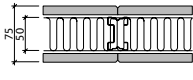
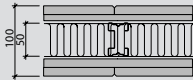




#### Module joints

Modules in the Ventura range are assembled using edge clips ensuring an almost continuous wall surface.

Module type	Module surface	Standard module widths mm	Width mm	Height mm	Module thickness mm (wall type)
 <p><b>Module A</b> Full-height module.</p>	Panel: Boards with wallpaper or laminate, veneer, or as required.	900	max. 1200	*	75 (TV2-11) 100 (TV1-11, TV2-12) 125 (TV1-12) 150 (TV2-21) 165 (TV2-22)
 <p><b>Module L</b> Door module</p>	Panel: Boards with wallpaper or laminate, veneer, or as required. Door: Surface-treated, painted wood, veneer or glass. Casing: Wood, steel or aluminium.	900	min. 750 max. 2000 (double door)	* door max. 3200	75 (TV2-11) 100 (TV1-11, TV2-12) 125 (TV1-12) 150 (TV2-21) 165 (TV2-22)
 <p><b>Module P</b> Full-height door module.</p>	Door: Surface-treated, painted wood, veneer or glass. Casing: Wood, steel or aluminium.	900	min. 750 max. 2000 (double door)	max. 3600	75 (TV2-11) 100 (TV1-11, TV2-12) 125 (TV1-12) 150 (TV2-21) 165 (TV2-22)

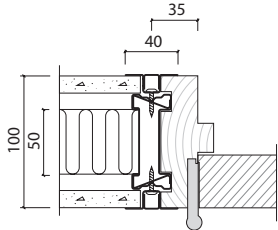
\* Depending on the type of wall.

Wall type	Description	Thickness mm	Weight Kg/m <sup>2</sup>	Insulation mm	Sound attenuation Rw dB	Fire class min.	Post mm
	<b>Ventura type TV1-11</b> 100mm single wall, consisting of a 72mm steel frame structure with a 13mm plaster board on each side. Insulated using 50 or 75mm mineral wool.	100	28	50	44	BS30	72
	<b>Ventura type TV1-12</b> 125mm single wall, consisting of a 72mm steel frame structure with two 13mm plaster boards on each side. Insulated using 50mm mineral wool.	125	47	50	48	BS60	72
	<b>Ventura type TV2-11</b> 75mm single wall, consisting of a 49mm steel frame structure with two 13mm plaster boards on each side. Insulated using 50mm mineral wool.	75	28	50	43	BS30	49
	<b>Ventura type TV2-12</b> 100mm single wall, consisting of a 49mm steel frame structure with two 13mm plaster boards on one side and 13+9mm boards on the other side. Insulated using 50mm mineral wool.	100	46	50	48	BS60	49
	<b>Ventura type TV2-21</b> 150mm double wall, consisting of a 49mm steel frame structure with a 13mm plaster board on each side. Insulated using 2x50mm mineral wool.	150	30	2x50	49	BS60	2x49
	<b>Ventura type TV2-22</b> 165mm double wall, consisting of two 49mm steel frame structures with two 13mm plaster boards on each side. Insulated using 2x50mm mineral wool.	165	48	2x50	53	BS90	2x49

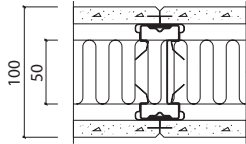
**Module joints**

**Module joints**

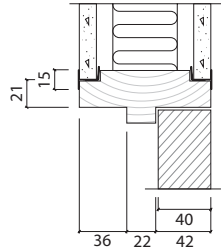
**Panel joints**



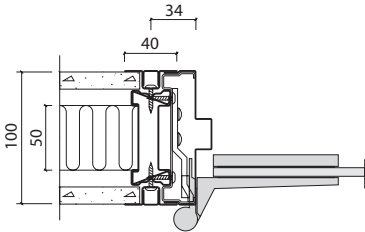
210.10.1006



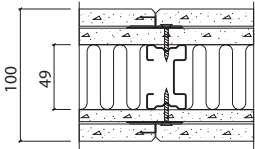
220.10.1002



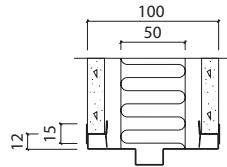
210.15.1014



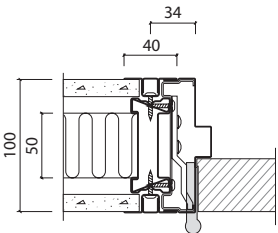
210.10.1009



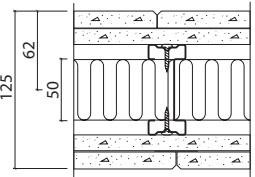
220.10.1004



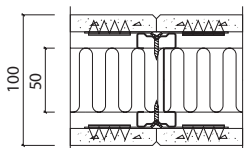
210.15.1015



210.10.1020



220.10.1009



220.10.1001

TV

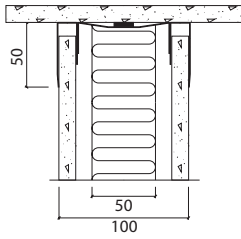
Ventura

Ventura - Sectional view

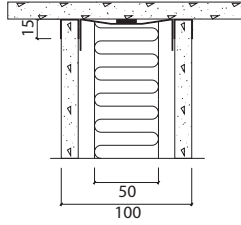
Top solutions

Top solutions

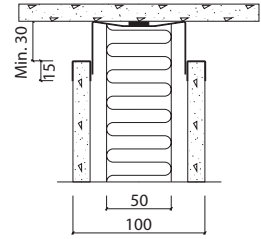
Top solutions



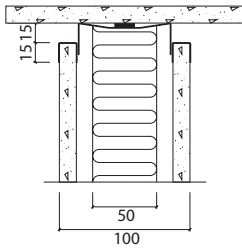
210.20.1001



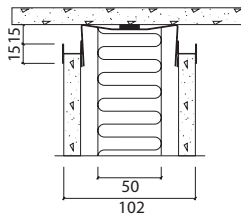
210.20.1018



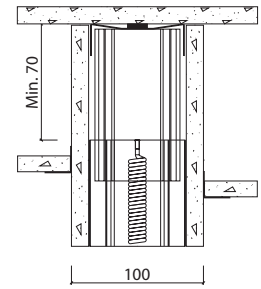
220.20.1002



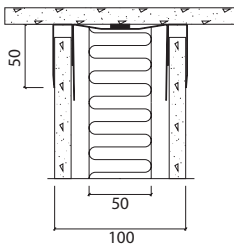
210.20.1004



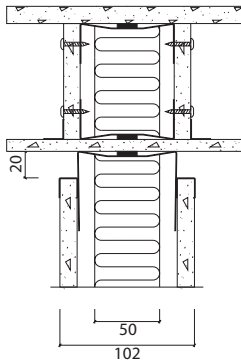
210.20.1024



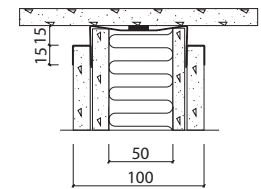
220.20.1003



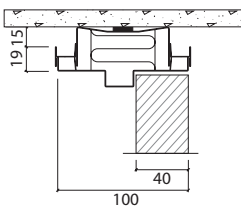
210.20.1012



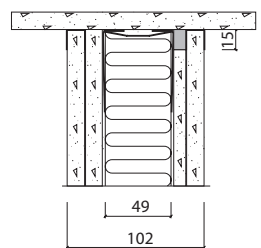
210.20.1029



220.20.1004



210.20.1013



220.20.1005

TV

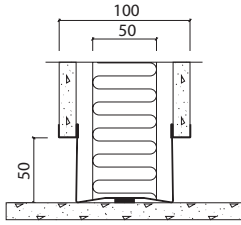
Ventura

Ventura - Sectional view

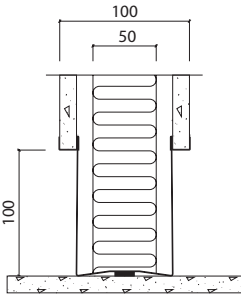
Base solutions

Base solutions

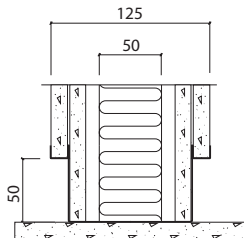
Base solutions



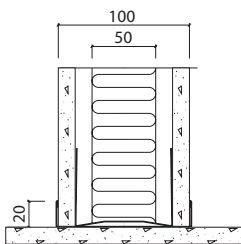
210.30.1001



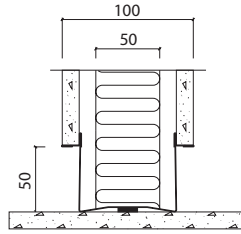
210.30.1004



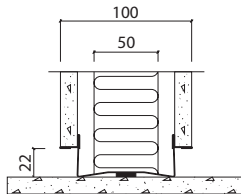
210.30.1011



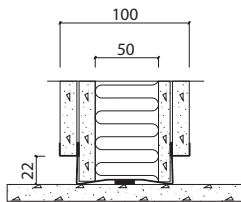
210.30.1012



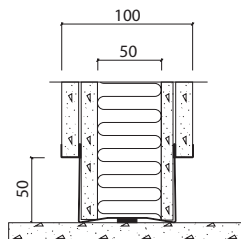
210.30.1013



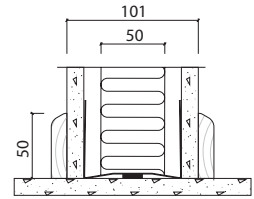
210.30.1014



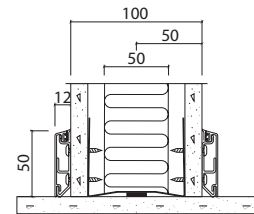
210.30.1015



210.30.1016



220.30.1002



220.30.1006



TV

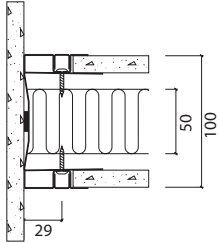
Ventura

Ventura - Sectional view

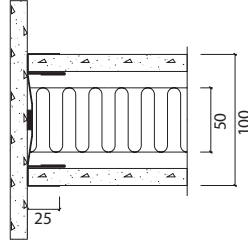
Fixing to walls

Fixing to walls

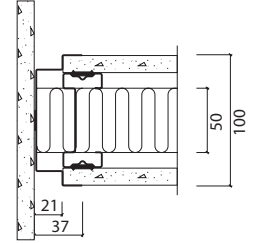
Fixing to walls



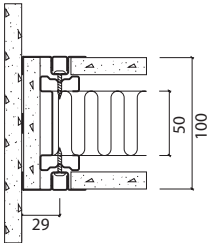
210.40.1001



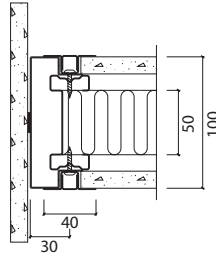
210.40.1016



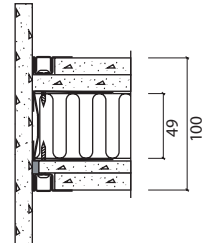
220.40.1003



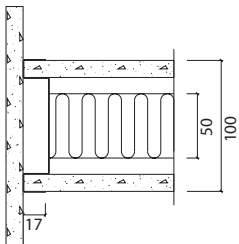
210.40.1002



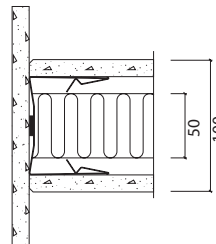
210.40.1021



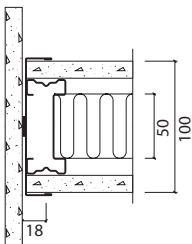
220.40.1004



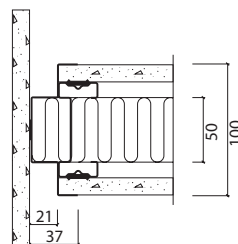
210.40.1014



220.40.1001



210.40.1015

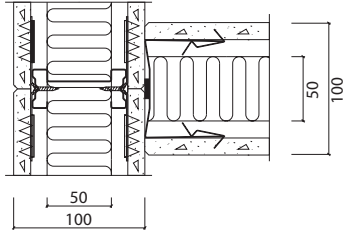


220.40.1002

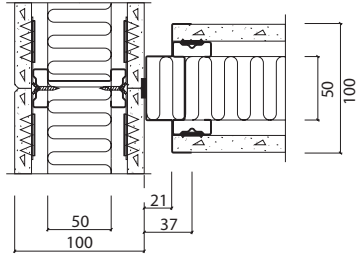
**T-joints**

**End solutions**

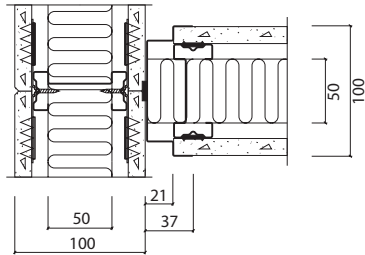
**Corner joints**



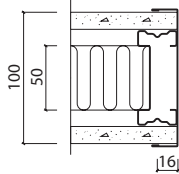
220.50.1001



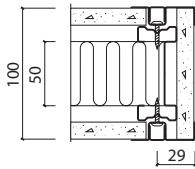
220.50.1002



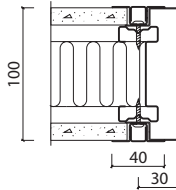
220.50.1003



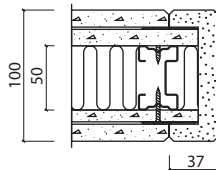
210.60.1001



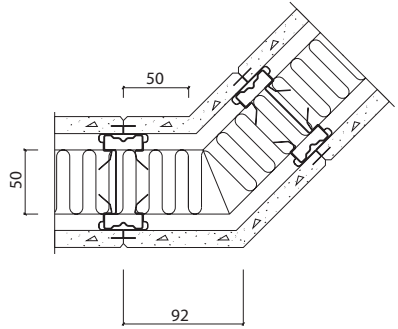
210.60.1002



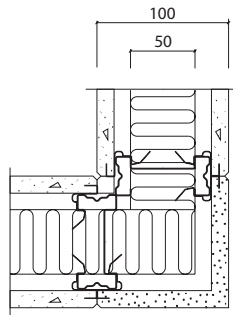
210.60.1005



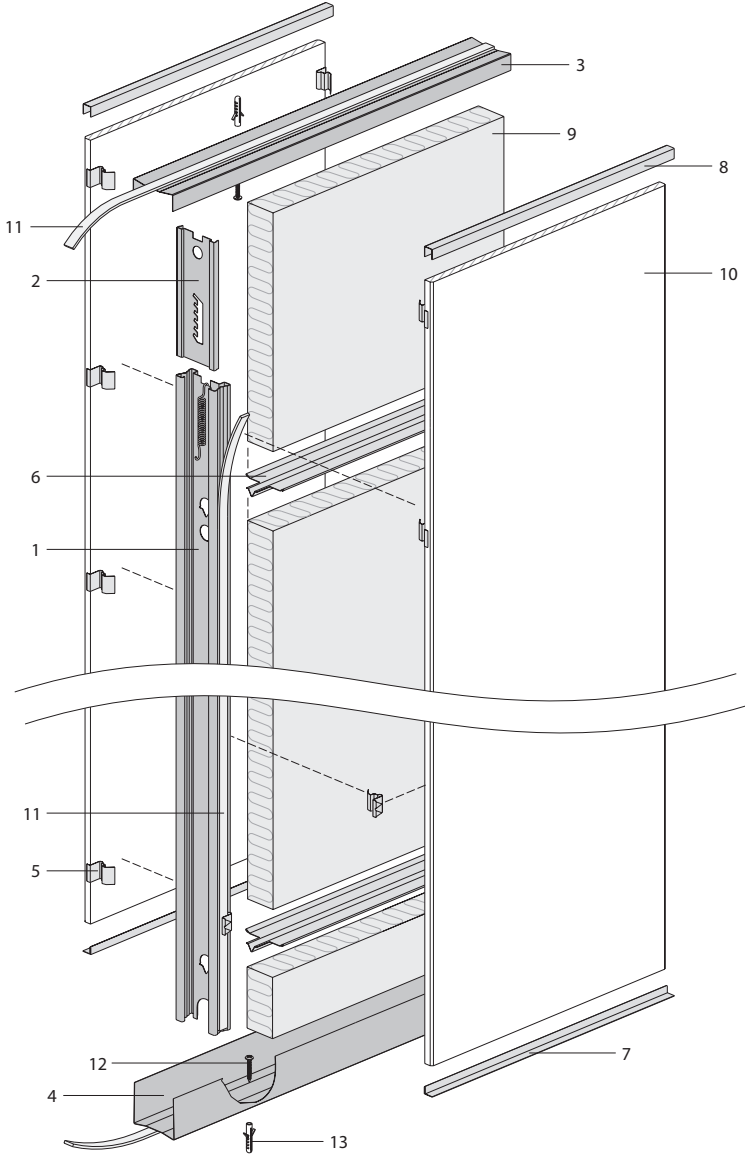
220.60.1001



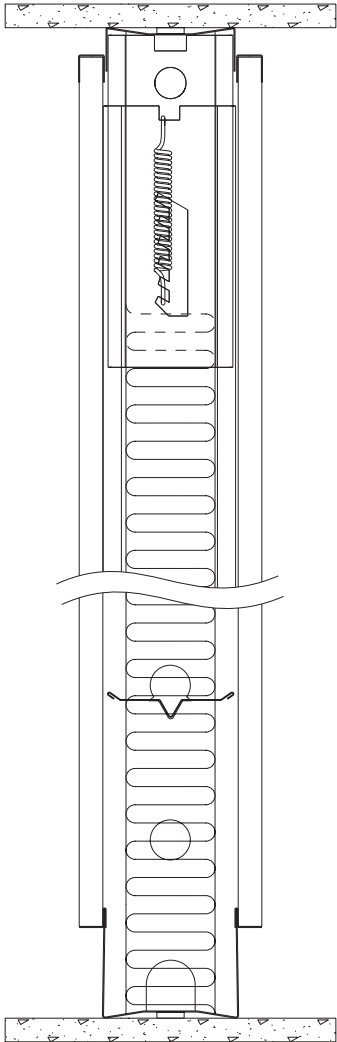
220.74.1001



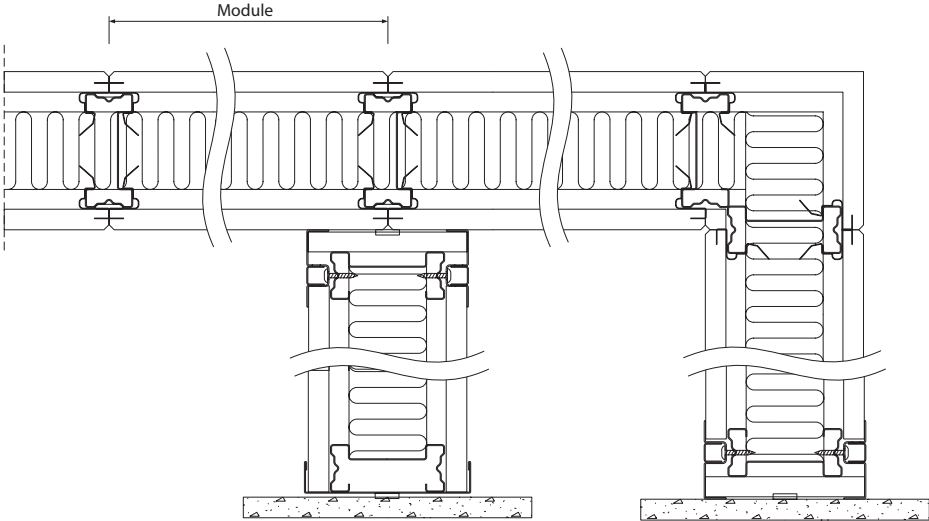
220.79.1001

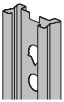
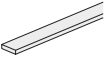

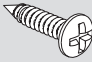
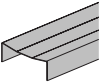

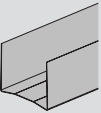
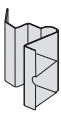
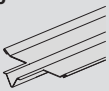
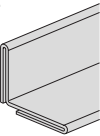
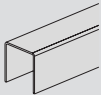
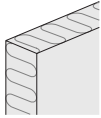
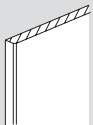


Vertical section



Horizontal section



Component	Component	
<p>1</p>  <p>Post</p>	<p>11</p>  <p>Acoustic tape</p>	
<p>2</p>  <p>Jack w. spring</p>	<p>12</p>  <p>Screw</p>	
<p>3</p>  <p>Head trim</p>	<p>13</p>  <p>Raw plug</p>	
<p>4</p>  <p>Base trim</p>		
<p>5</p>  <p>Edge clip</p>		
<p>6</p>  <p>Spacer bar</p>		
<p>7</p>  <p>Angle bottom trim</p>		
<p>8</p>  <p>U-top trim</p>		
<p>9</p>  <p>Mineral wool</p>		
<p>10</p>  <p>Plasterboard</p>		