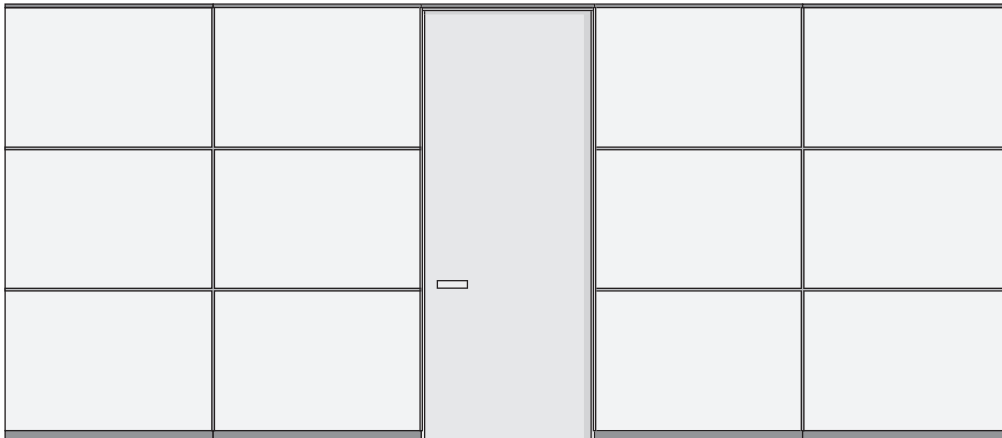


# Ventura Open

Office Partitions  
Technical guide



Ventura Open is an office partition which can also be used as a panel wall or a cladding wall in, for example, reception areas or meeting rooms. Like the other products in the Triplan system, it can be fully integrated into these products and relocated.

The appearance of Ventura Open walls can vary a lot, depending on the width, height and type of panel surfaces; however, it never loses its characteristic, modern panel wall design.

The Ventura Open design adds character to any room.

Apart from being a flexible, relocatable office partition, Ventura Open can be combined with other Triplan product lines which adds to the flexibility since the system can be adapted to any change made inside the building. Quick noise and dust-free assembly and relocation without the use of special-purpose tools.

Ventura is available in wall thicknesses from 75 to 165mm with an Rw sound reduction from 42 to 52 dB.

#### Module system

Like all product lines in the Triplan system, Ventura Open is a modular office partition with vertical/horizontal module joints.

The standard widths of the wall modules are 300, 450, 600, 900 and 1200mm, but the modules are also made to measure in widths from 200 to 2100mm.

Horizontal module joints are made to measure for projects.



The standard widths of the door modules are 900 and 1000mm for single doors and 1200, 1500 and 1730mm for double doors.

#### Modules with panels

Panels for modules are available in different surfaces. As standard covered with plaster-board, but they also come in, for example, MDF or other boards. Ventura Open offers many solutions.

#### Joints

Vertical Ventura Open module joints are characterised by the open groove. The groove is variable from 6 to 17mm. Horizontally, the product line has an identical section – the "Open" section – the one that divides the wall into panels.

Shelves and cabinets can be hung onto the sections.

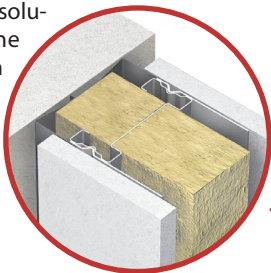
#### Combined Triplan systems

Ventura Open consists of the same basic components as other product ranges in the Triplan system and can, therefore, be combined with these ranges; for example as an extension of a glass wall and/or combined with Flexica Line as a corridor wall for the Ventura Open.

A wide range of joint sections for modules, panels and doors as well as for fixing to ceilings, walls and floors are available for Ventura Open. The simplest joint sections are shown here.

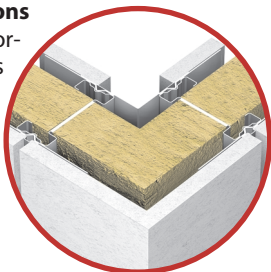
#### Fixing to walls

Fixing to the existing walls of the building, perpendicular to them or as end-to-end solutions. Here, the office partition is fitted to the existing wall using a recessed solution.



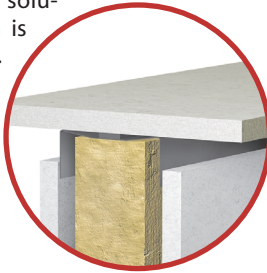
#### Corner solutions

45° and 90° corner solutions are available.



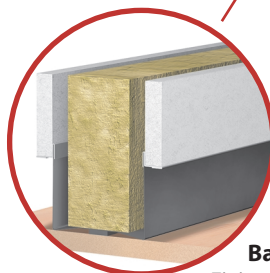
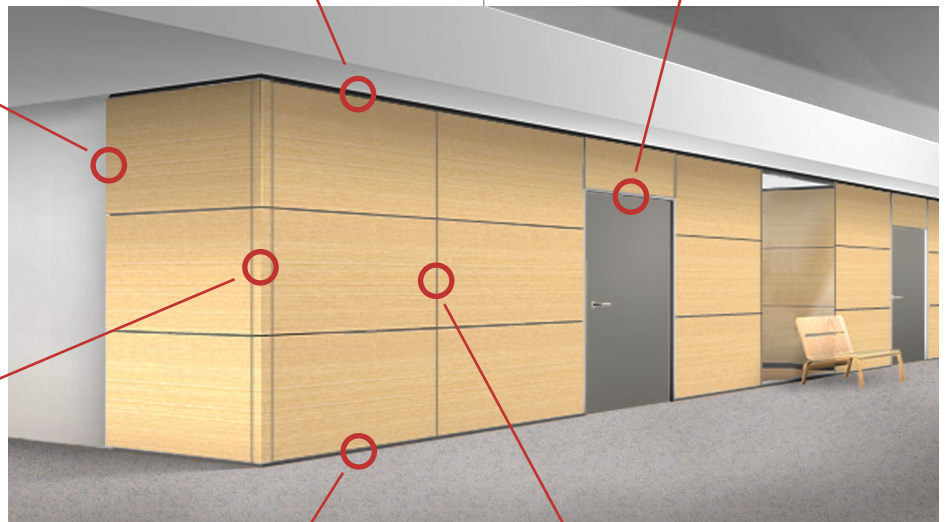
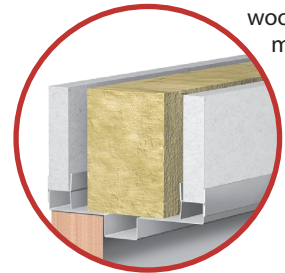
#### Top solutions

Fixing to the ceiling using simple and stable structures. Also solution for suspended ceilings. The solution shown is with a recess.



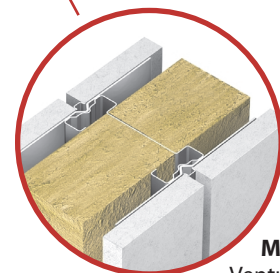
#### Door solutions

The Ventura Open line allows integration of a variety of frame and door solutions, such as glass and wooden doors in optional dimensions and surfaces and with steel, aluminium and wooden frames.









#### Base solutions

Fixing to floor using simple and stable structures. The solution shown has a 50mm recess. Levelling solutions for sloping floors as well as a variety of skirtings are available.



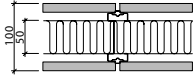
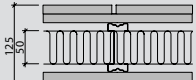
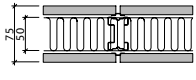
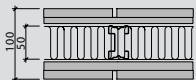
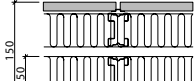

#### Module joints

Ventura Open is characterised by open module joints. Openings are variable from 6 to 17mm.

Module type	Module surface	Standard module widths mm	Width mm	Height mm	Module thickness mm (wall type)
 <p><b>Module A</b> Full-height solid module</p>	Panel: Boards with wallpaper laminate, veneer, or as required.	300 / 450 600 / 900 / 1200	max. 1250	* (TVO 2-11 max. 2400)	75 (TVO 2-11) 100 (TVO 1-11, TVO 2-12) 125 (TVO 1-12) 150 (TVO 2-21) 165 (TVO 2-22)
 <p><b>Module B</b> Full-height solid module with one centre transom</p>	Panel: Boards with wallpaper or laminate, veneer, or as required.	300 / 450 600 / 900 / 1200	max. 3000 depending on the choice of surface	* (TVO 2-11 max. 2400)	75 (TVO 2-11) 100 (TVO 1-11, TVO 2-12) 125 (TVO 1-12) 150 (TVO 2-21) 165 (TVO 2-22)
 <p><b>Module C</b> Full-height solid module with two centre transoms</p>	Panel: Boards with wallpaper or laminate, veneer, or as required.	300 / 450 600 / 900 / 1200	max. 3000 depending on the choice of surface	* (TVO 2-11 max. 2400)	75 (TVO 2-11) 100 (TVO 1-11, TVO 2-12) 125 (TVO 1-12) 150 (TVO 2-21) 165 (TVO 2-22)
 <p><b>Module D</b> Full-height solid module with three centre transoms</p>	Panel: Boards with wallpaper or laminate, veneer, or as required.	300 / 450 600 / 900 / 1200	max. 3000 depending on the choice of surface	* max. 3600 (TVO 2-11 max. 2400)	75 (TVO 2-11) 100 (TVO 1-11, TVO 2-12) 125 (TVO 1-12) 150 (TVO 2-21) 165 (TVO 2-22)
 <p><b>Module L</b> Door module</p>	Panel: Boards with wallpaper or laminate, veneer, or as required. Door: Surface-treated, painted wood, veneer or glass. Casing: Wood, steel or aluminium.	900 / 1000 / 1730	min. 750 max. 1732	* dør max. 3200	75 (TVO 2-11) 100 (TVO 1-11, TVO 2-12) 125 (TVO 1-12) 150 (TVO 2-21) 165 (TVO 2-22)
 <p><b>Module P</b> Full-height door module</p>	Door: Surface-treated, painted wood, veneer or glass. Casing: Wood, steel or aluminium.	900 / 1000 / 1730	min. 750 max. 1930	* max. 3600	75 (TVO 2-11) 100 (TVO 1-11, TVO 2-12) 125 (TVO 1-12) 150 (TVO 2-21) 165 (TVO 2-22)

\*depending on the type of wall.

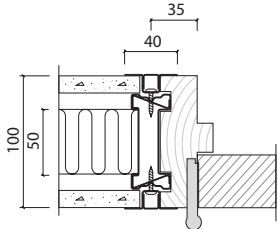
## Ventura Open - Wall types

Wall type	Description	Thickness mm	Weight Kg/m <sup>2</sup>	Insulation mm	Sound attenuation Rw dB	Fire class min.	Post mm
	<b>Ventura Open type TV0 1-11</b> 100mm single wall, consisting of a 72mm steel frame structure with a 13mm plaster board on each side. Insulated using 50 or 75mm mineral wool.	100	28	50	43	BS30	72
	<b>Ventura Open type TV0 1-12</b> 125mm single wall, consisting of a 72mm steel frame structure with two 13mm plaster boards on each side. Insulated using 50mm mineral wool.	125	47	50	47	BS60	72
	<b>Ventura Open type TV0 2-11</b> 75mm single wall, consisting of a 49mm steel frame structure with two 13mm plaster boards on each side. Insulated using 50mm mineral wool.	75	28	50	42	BS30	49
	<b>Ventura Open type TV0 2-12</b> 100mm single wall, consisting of a 49mm steel frame structure with two 13mm plaster boards on one side and 13+9mm boards on the other. Insulated using 50mm mineral wool.	100	46	50	47	BS60	49
	<b>Ventura Open type TV0 2-21</b> 150mm double wall, consisting of two 49mm steel frame structures with a 13mm plaster board on each side. Insulated using 2x50mm mineral wool.	150	30	2x50	48	BS60	2x49
	<b>Ventura Open type TV0 2-22</b> 165mm double wall, consisting of two 49mm steel frame structures with two 13mm plaster boards on each side. Insulated using 2x50mm mineral wool.	165	48	2x50	52	BS90	2x49

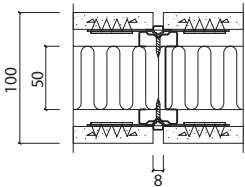
Module joints

Module joints

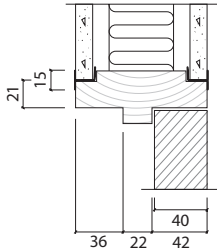
Panel joints



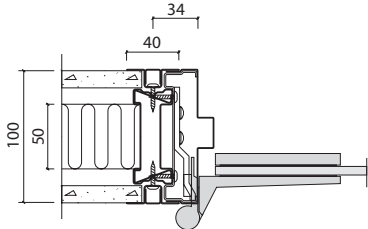
210.10.1006



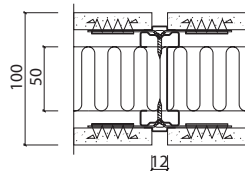
221.10.1002



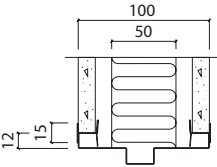
210.15.1014



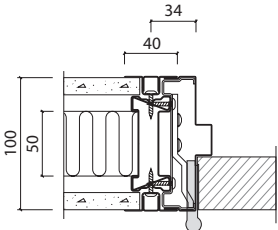
210.10.1009



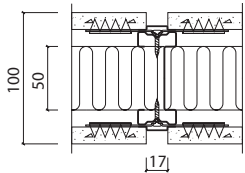
221.10.1003



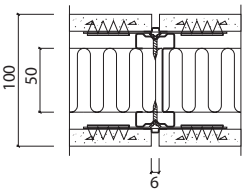
210.15.1016



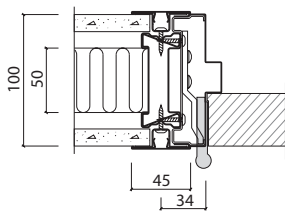
210.10.1020



221.10.1004



221.10.1001

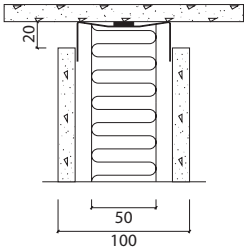


221.10.1005

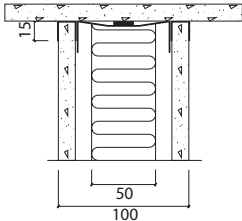
Top solutions

Top solutions

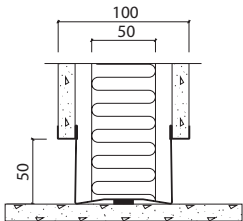
Base solutions



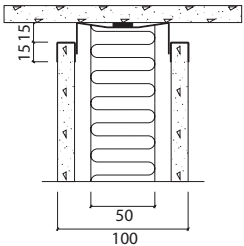
221.20.1004



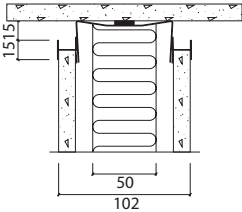
210.20.1018



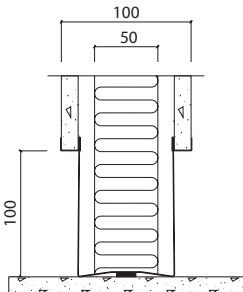
210.30.1001



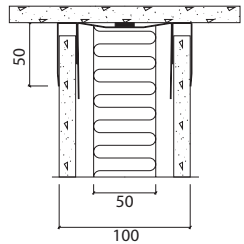
210.20.1004



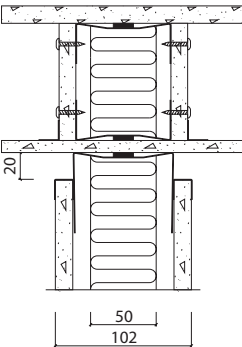
210.20.1024



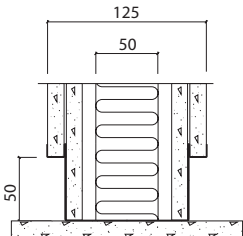
210.30.1004



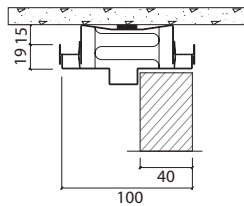
210.20.1012



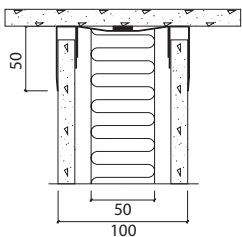
210.20.1029



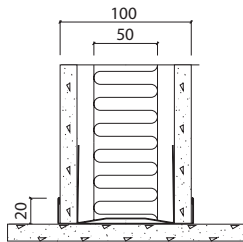
210.30.1011



210.20.1013



210.20.1001

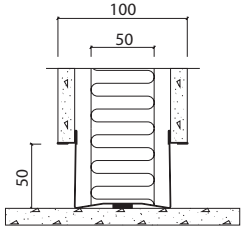


210.30.1012

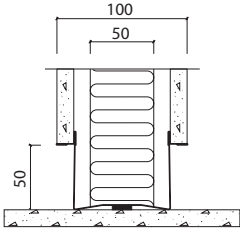
Base solutions

Base solutions

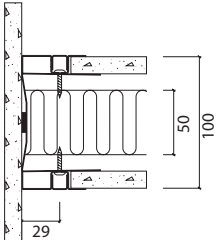
Fixing to walls



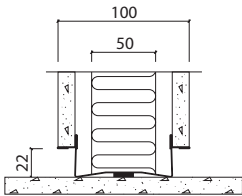
210.30.1013



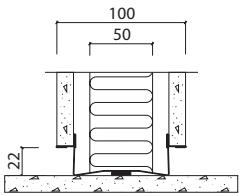
221.30.1001



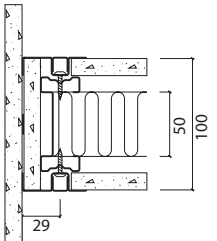
210.40.1001



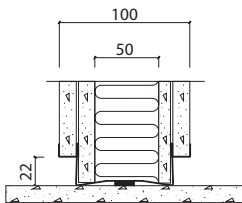
210.30.1014



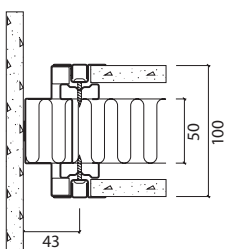
221.30.1004



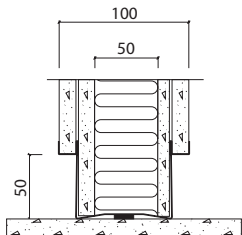
210.40.1002



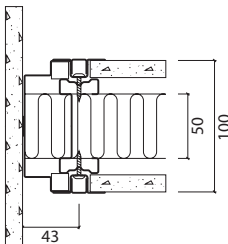
210.30.1015



210.40.1008



210.30.1016



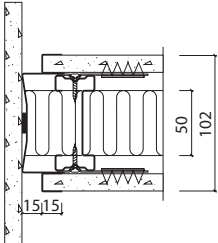
210.40.1011



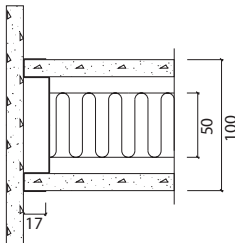
Fixing to walls

Fixing to walls

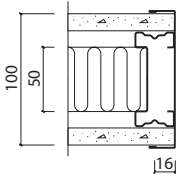
End solutions



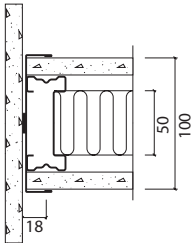
221.40.1002



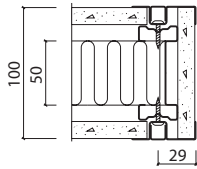
210.40.1014



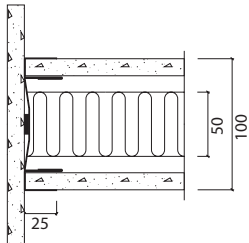
210.60.1001



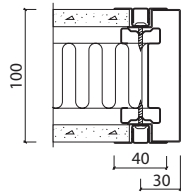
210.40.1015



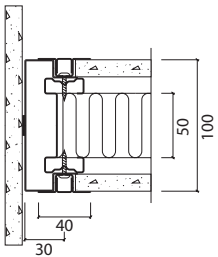
210.60.1002



210.40.1016



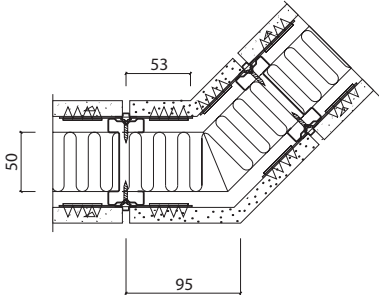
210.60.1005



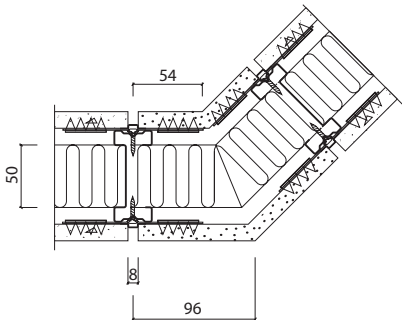
210.40.1021

**Corner joints**

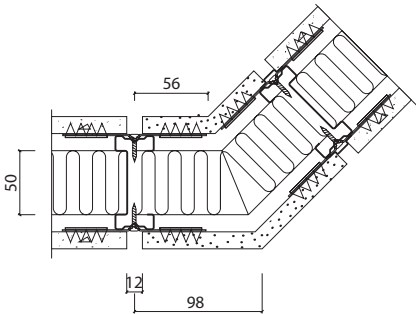
**Corner joints**



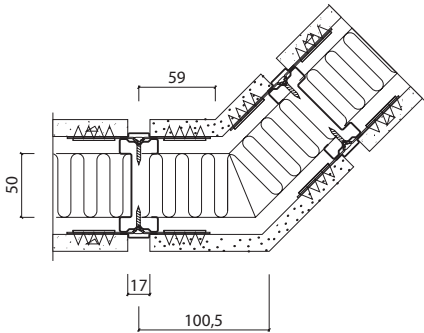
221.74.1001



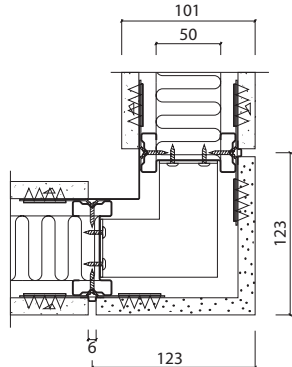
221.74.1002



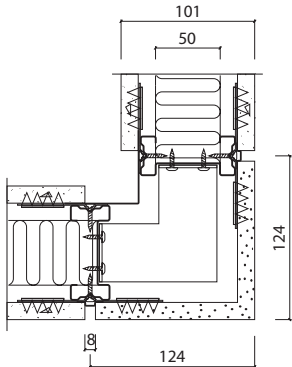
221.74.1003



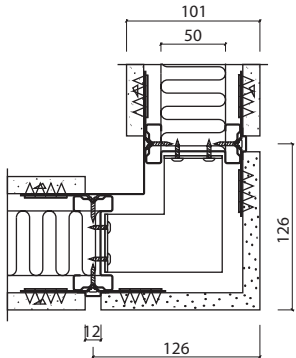
221.74.1004



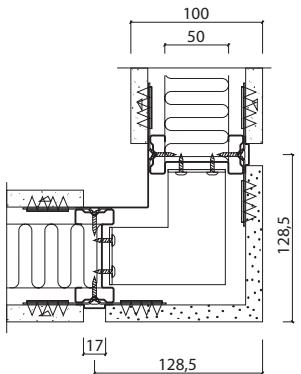
221.79.1001



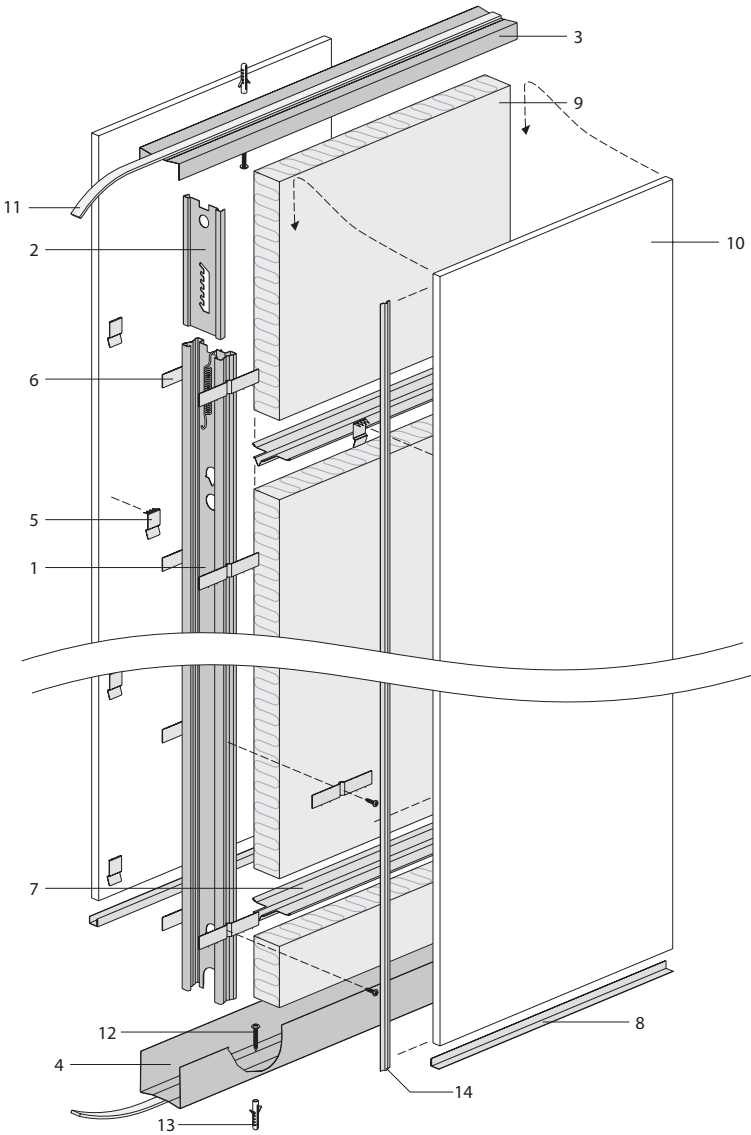
221.79.1002



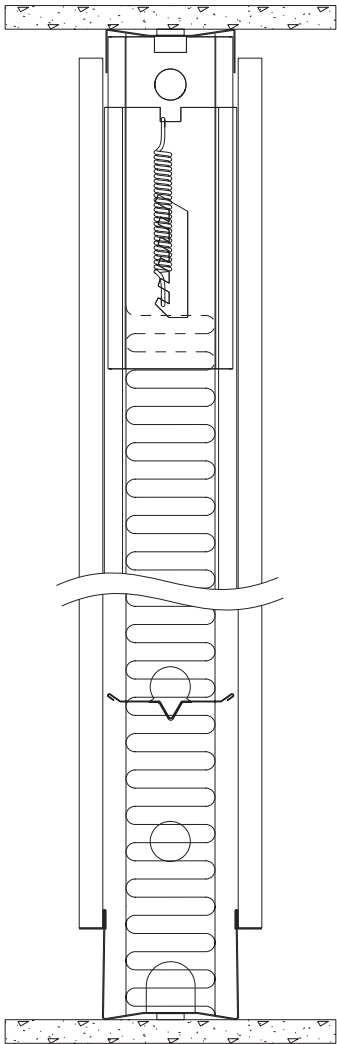
221.79.1003



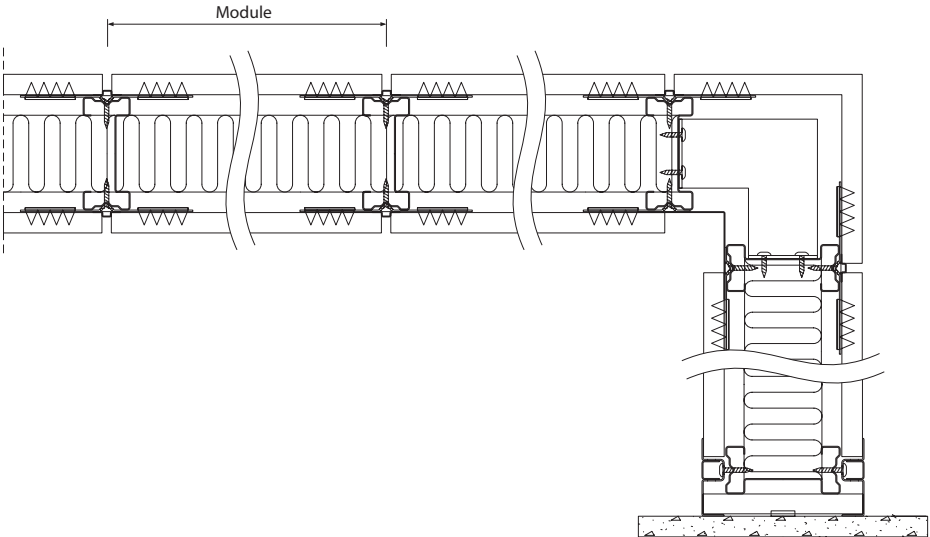
221.79.1004

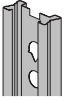
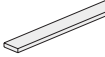

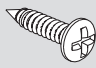
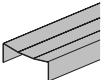

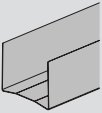
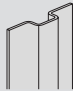
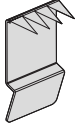
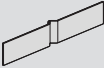
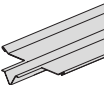
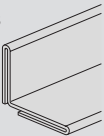
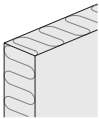
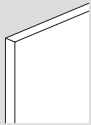


Vertical section



Horizontal section



Component	Component	
<p>1</p>  <p>Post</p>	<p>11</p>  <p>Acoustic tape</p>	
<p>2</p>  <p>Jack w. spring</p>	<p>12</p>  <p>Screw</p>	
<p>3</p>  <p>Head track</p>	<p>13</p>  <p>Raw plug</p>	
<p>4</p>  <p>Base track</p>	<p>14</p>  <p>Shadow section</p>	
<p>5</p>  <p>Back clip</p>		
<p>6</p>  <p>Back clip support</p>		
<p>7</p>  <p>Spacer bar</p>		
<p>8</p>  <p>Angle bottom trim</p>		
<p>9</p>  <p>Mineral wool</p>		
<p>10</p>  <p>Plasterboard</p>		