

TP LITE TWIN

DOUBLE GLAZED FULL GLASS WALLS

triplan.net | T.: +45 4553 9999 | info@triplan.net

FACTS ABOUT TP LITE TWIN

- TP Lite Twin is a double glazed frameless full glass wall
- Good sound insulation
- The glass is inserted into slim alu runners at top and base and the glasses butt join using a transparent or optionally black dry silicone tape with strong adhesive capacity ensuring no leaks
- Choose between glazed doors or wooden doors. Full height or with glass above

1. WALL TYPES



The acoustic result for the glass in the TP Lite Twin system depends on the type of glass that is used and how they are combined. Glasses of different thicknesses provide the best sound insulation.

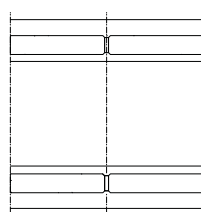
The sound rating can optionally be improved further by selecting perforated inner framing with insulation. The vertical junctions are as standard done using a 2 mm dry adhesive tape.

Optionally a 5 mm wet silicone junction.

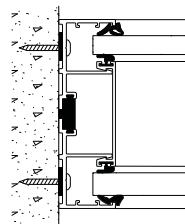
Consult furthermore the directions issued by the Glass industry on [Fully glazed interior partitions - Choice of glass for interior partitions](#).
 Datasheet for hardened glass [DS/EN 12150](#).
 Datasheet for laminated glass [DS/EN 14449](#).

JOINTS

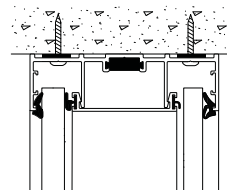
See detail drawings at triplan.net



Horizontal section.
Module junction.



Horizontal section.
Abutment.



Vertical section.
Head and base detail.
3-pieces runner.

2. DOOR TYPES



Doors are solid wooden doors or glazed doors with a door frame in aluminium.

Standard doors are M9 or M10, however, doors are also available in optional widths and heights (contact Triplan).

Doors are single or double with or without glass above.

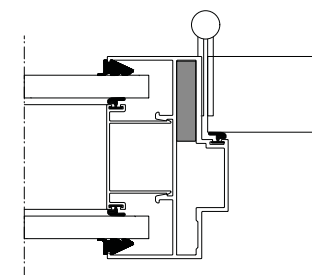
Wooden doors are with Abloy pin hinges. Door colour NCS 0502Y or upon request.

Glazed doors with 2 hinges and choice of lock cases. Optionally with electric strike plate and hinges with hydraulic oil pressure. Optionally drop seals below the doors.

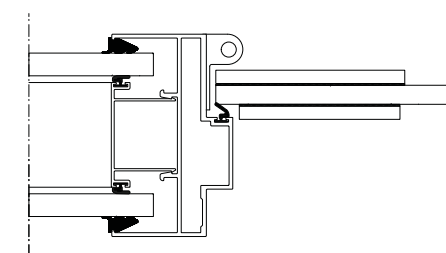
Door frames are in aluminium, anodized or powder coated RAL 9010. Optionally in a special colour.

DOOR SOLUTIONS

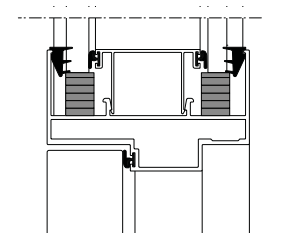
See detail drawings at triplan.net



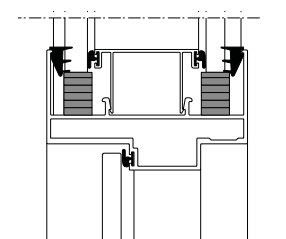
Horizontal section.
Solid door.



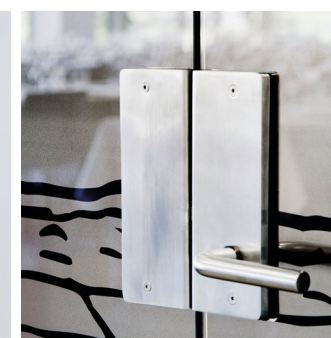
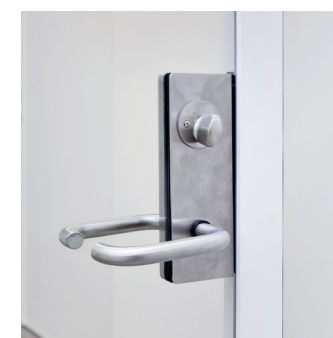
Horizontal section.
Glazed door.



Vertical section.
Solid door with glass above.



Vertical section.
Glazed door with glass above.



TP LITE TWIN

– double glazed frameless full glass wall

- A simple and elegant design
- Easy to assemble
- Short delivery time for standard solutions
- Triplan standard components
- Flexible and quick frame assembly
- Excellent acoustic performance

Read
more at
triplan.net

OPERATION AND MAINTENANCE

Glass: **Cleaning for the first time:**
Glass delivered from Triplan has been washed, but not polished. Can be wiped off with a weak ammonium chloride solution followed by washing with clean water and drying with a dry cloth.

Ongoing cleaning:
Glass should be washed as needed using a suitable cleaning agent and polished with a soft cloth. Use clean water and equipment to avoid scratches.

Doors: Door surfaces and frames are cleaned by wiping them with a moistened cloth, wrung with a weak solution of water and ordinary cleaning agent. Avoid cleaning agents containing alcohol, solvents, chlorine or ammonium chloride. Hinges and lock cases should be lubricated as needed, but at least once a year.

Runners: Sections and sealing tape should be cleaned by wiping them with a moistened cloth wrung with a weak solution of water and ordinary cleaning agent. Avoid cleaning agents containing alcohol, solvents, chlorine or ammonium chloride.



The TP system also includes

TP Lite

TP Acoustic

TP Fire