

Ventura



Ventura

- Ventura is a partitioning system of modular construction with a discrete vertical V-junction between the modules.
- Ventura offers many possibilities of floor, ceiling and corner mounting, and can be integrated with Flexica glass and door modules.
- As standard, modules are only supplied in widths of 900 mm and 1200 mm; smaller widths can be made to order.
- The wall surfaces are delivered with any surface, as requested, e.g. wallpaper, vinyl or steel.

General information

Triplan partitioning systems are easy to install. The various systems are all based on the same components, so that a wall can be converted to another type; a glazed wall can, for example, be changed to or integrated with a panel-covered wall in a short time and without dismantling the whole structure.

Triplan partitioning systems are delivered ready for immediate installation and use.

Most components in a Triplan wall can be re-used in connection with re-location.

The basic construction of the partitioning system provides excellent sound, fire and environmental properties.

For more information, please visit: www.triplan.net



mm

Kg/m²

mm



Rw dB



Min.



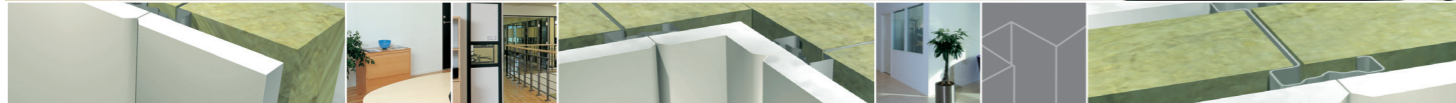
Post

Please contact your local Triplan representative or visit www.triplan.net for further information and technical specifications.

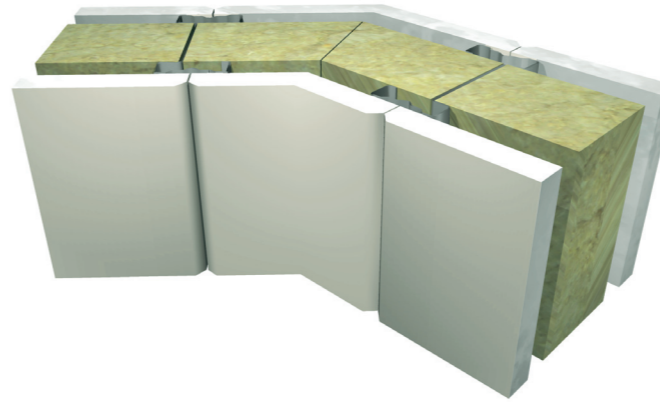
	mm	Kg/m ²	mm	Rw dB	Min.	Post
TV-1	100-200	30-60	50 (2x50)	41-53	30-60	72 mm
TV-2	75-165	28-56	50 (2x50)	39-52	30-60	49 mm

Ventura

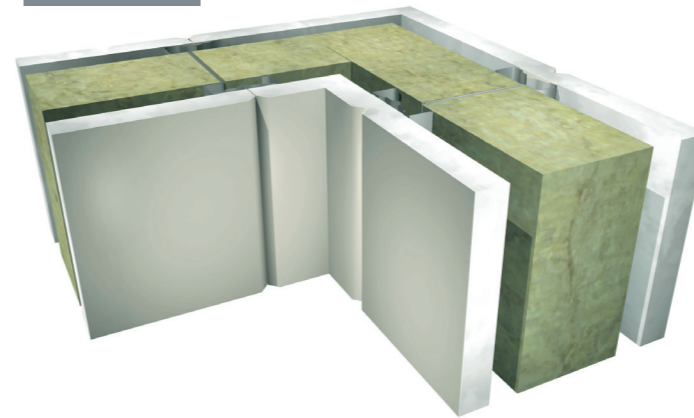
Ventura



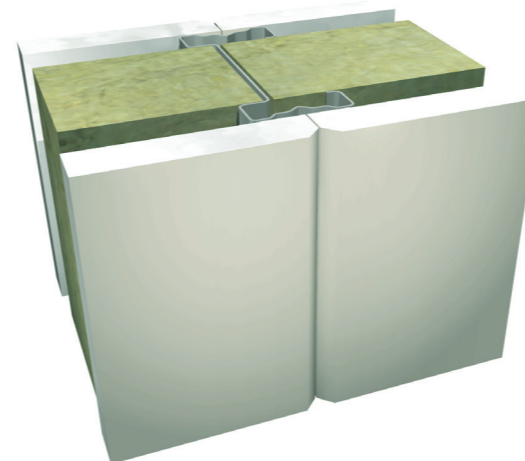
45° Corner



90° Corner



Module Junction



Vertical Module Section

