

Flexica Line



Flexica Line

- Flexica Line is a partitioning system of modular construction divided into glass panels by vertical and horizontal bars.
- The size and number of the glass panels can be varied, and the modules can be supplied single or double glazed.
- Modules can be supplied in widths up to 3600 mm.
- Flexica Line can be supplied with many glass types and coatings. Frame sections can be in any colour or combination of colours. Venetian blinds can be incorporated.
- Flexica Line can incorporate a variety of Door options.

General information

Triplan partitioning systems are easy to install. The various systems are all based on the same components, so that a wall can be converted to another type; a glazed wall can, for example, be changed to or integrated with a panel-covered wall in a short time and without dismantling the whole structure.







Triplan partitioning systems are delivered ready for immediate installation and use.

Most components in a Triplan wall can be re-used in connection with re-location.

The basic construction of the partitioning system provides excellent sound, fire and environmental properties.

For more information, please visit: www.triplan.net

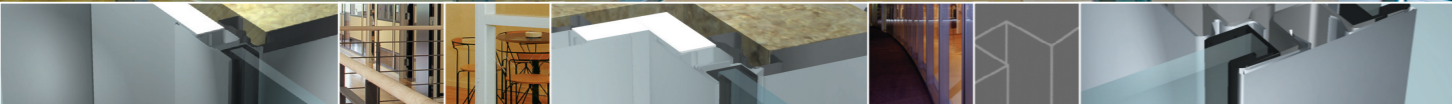
Please contact your local Triplan representative or visit www.triplan.net for further information and technical specifications.

	 mm	 Kg/m ²	 mm	 Rw dB	 Min.	 Post
TFL-1	100	19	N/A	max. 36*	3*	72 mm
TFL-2	100	30	N/A	32-45*	3*	72 mm

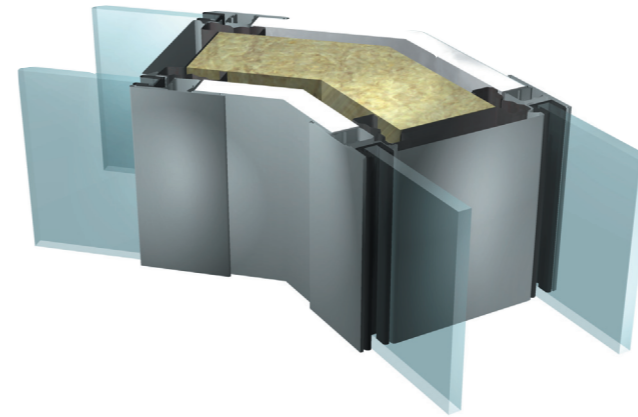
* For fire and sound ratings please contact your local Triplan representative.

Flexica Line

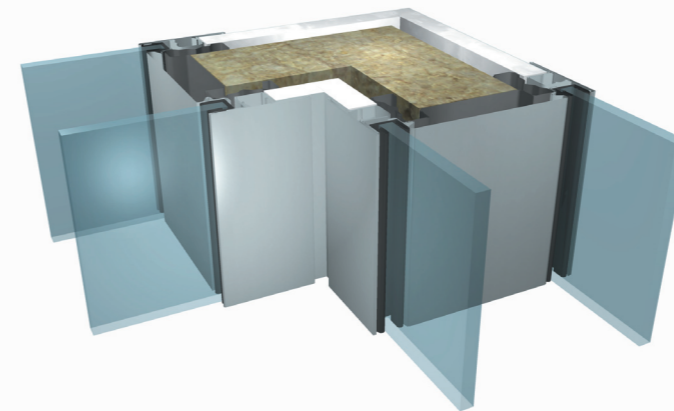
Flexica Line



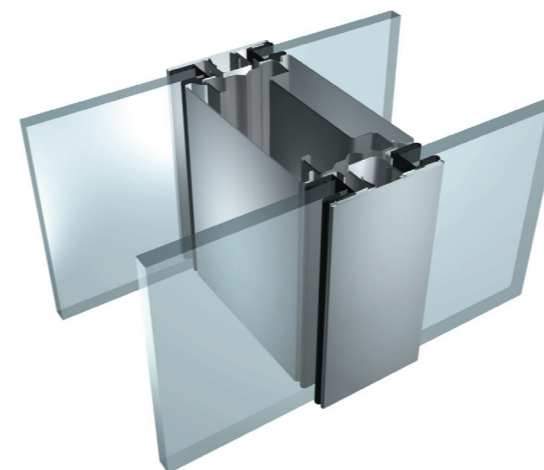
45° Corner



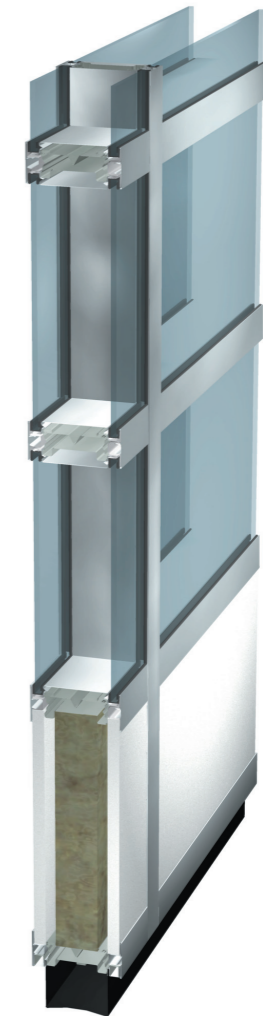
90° Corner



Module Junction (Double Glazed)



Vertical Module Section



Module Junction (Single Glazed)

